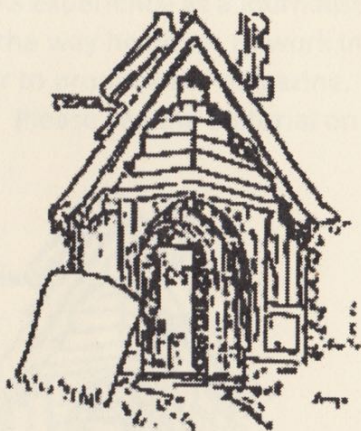
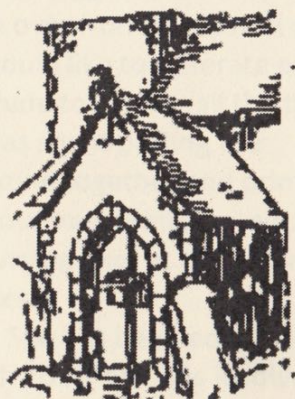


# Elmsted with Hastingleigh Community News

*St James the Great  
Elmsted*



*St Mary the Virgin  
Hastingleigh*

September 2016

40p

# September

## in Elmsted with Hastingleigh

**T**HE magazine committee is pleased to welcome Tony Durrant as the new editor of *The Elmsted with Hastingleigh Community News*.

Tony, his son Alfie and Boot their Border Terrier have lived in Hastingleigh for twelve years and we are grateful to him for stepping forward to fill the post of editor. As a result you may notice a few changes herein.

These reflect on both Tony's experience as a journalist and the way he needs to work in order to produce the magazine.

Please see the Editorial on

**page 3** for more details —he's open to suggestions. Tony has taken over from Sue Boxall and we would like to reiterate our gratitude to Sue for all the time she has spent putting the magazine together and printing it on our own printer — a time-consuming and, at times, fraught business!

Sue has been editor since March 2012, but was involved in the magazine for many years before that. She will be delighted to see someone else take the reins, but will continue to be involved with the committee and will stand in as Guest Editor if Tony is unavailable as a result of work commitments.

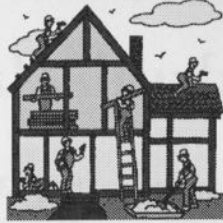
*The Elmsted with Hastingleigh Community News* has been produced since 1985, although it existed as a parish magazine before that time. Here's to the next 30-odd years!

**Selina Farnfield**  
Chairperson  
News Committee





## General Builders and Property Maintenance



All aspects covered

Free Estimates

Glenn Young 01233 750427

Seasoned logs available

free local delivery



## Chris Dryland

### Property Maintenance

*Decking - concreting - sheds - pergolas - weatherboarding*

*Fencing - boundaries - minor electrical - decorating - guttering*

*small projects - large projects - emergencies*

Most aspects of Household and Garden Maintenance

References available

Also

Tipis for hire

[www.bighilltipis.co.uk](http://www.bighilltipis.co.uk)



For reliable service tel: 01233 750350 or 07983 242787



# A tradition of news and views

**A**s I write this we are enjoying an English summer during which our lovely part of Kent is a special place: gardens are colourful, hedgerows thick, crops ripen and the harvest contractors are roaring around the narrow lanes with abandon – ‘*Oh to be in England now that John Deere is here*’ (apologies to Browning).

I’ve taken over the task of pulling together the bits and pieces for the community news from Sue Boxall (thanks again to Sue for her sterling work) and, as you will see, I’ve already made some changes, not all intentional (moving from Sue’s version of Microsoft Publisher to mine jumbled the ads to say the least).

Sue and I (not forgetting Sheila Burrage; Bill Enderby and many others) are part of a tradition stretching back more than 100 years – see **page 11** for

the parish news of 1899. I’d also like to point out that although some call this newsletter ‘the parish mag’ it is actually done by and for the community rather than the ecclesiastical parishes (it is said a vicar in the busy days of the late 20th Century washed his hands of that duty).

To add some visual interest I’ve used some lovely drawings by the late Arthur Marsh (**pages 9 and 13**) who originally did them for the book *A Time to Remember, Some Recollections of a Kentish Village* (1985). I’d recommend it as a lovely read for anyone new to ‘these here parts’.

The community news committee would like to thank the Marsh family for agreeing to reproduce them. There was



## Wye Beauty

Shellac Manicures - colour lasts three weeks

Waxing - hot and warm

Electrolysis hair removal

Red Vein, Skin Tag and Milia treatment

Aromatherapy/Swedish body massage

Spray Tanning - lasts up to two weeks

Ear piercing

Facials

Microdermabrasion

Manicures/Pedicures

Threading

Laser Hair Reduction

Dermal Fillers/Botox

Semi-permanent make-up

**01233 811550**

Gift Vouchers available

35 years experience

Qualified/mature staff

Guinot Skincare

**29 Bridge Street, Wye**

**Robyn Gardener**

Open Tuesday - Friday 8.30 - 5pm (later by appt)

Saturday 9 - 4pm

**www.bodshamholidaylets.com**

**B&B**

Large Double Bedroom with sofa and LCD Smart TV

Continental breakfast

Tea and coffee-making facilities

### The SMITHY

Two Bedrooms

Beamed lounge with wood burner

Fully equipped kitchen

Bathroom

Enclosed garden

### The BARN

Two bedrooms

Open lounge

Diner and kitchen

Shower room

T: 01233 750042 M: 07989 584801

E: [info@bodshamholidaylets.com](mailto:info@bodshamholidaylets.com)

another resident, who went on to become an internationally renowned artist, Andrew Forge, whose drawings are on the cover. Again, thanks to Andrew's family for their goodwill in us using them.

We would like to invite anyone who wants to provide scenes from our communities for inclusion in this magazine.

They don't have to be buildings; trees, flowers, landscapes and people are welcome. The only stipulation is that they have to be clear enough to be replicated through the 'black on white' printing process.

Similarly, if you would like to share some thoughts, a village memory (yes please) or make a point, please feel free.

As is the custom, the Editor, on behalf of the community news committee, has the right to edit or refuse your submissions on all sorts of grounds (for fear of upsetting the neighbours, sedition and so on). All submissions by email to the address below.

**News, views, memories, gripes, poems, prayers and platitudes to:**  
**[elmstedwithhastingleighnews@yahoo.co.uk](mailto:elmstedwithhastingleighnews@yahoo.co.uk)**

## Contents

Message from committee chair **1**

Message from the editor **3**

W.I. Minutes **7**

The Batts lives on **9**

News from 1899 **11**

News from the Footpath Walkers **13**

Lord Whiskey fair **13**

Church news and information **15 - 17**

Diary dates **18 - 19**

Wye Surgery **21 - 23**

Lorry Way Down **25**

Godington News **35**

Community contacts **36**



**BUILDERS Ltd**

Restoration & Extensions of Period Domestic Property  
House Building and Conversions  
Design and Planning Services

Prospect Farm House, Lees Road, Brabourne Lees, Ashford, Kent TN25 6QE

Directors: J.E. and C.M. Browning Bsc (Hons), MCIOB, MASI

Telephone: 01303 813459

VAT Registration No: 661 7887 90



Domestic  
Installer  
Scheme

## **Edward Young** Electrical Installation & Security systems

Registered Electrician

Established over 30 years

All types of installation work carried out

Fault finding and repairs

Farm, domestic, commercial

01303 813654

07702 640237

# Hastingleigh with Elmsted Women's Institute



**Women's  
Institute**

## Minutes from the August meeting

**H**astingleigh with Elmsted W.I. met on Thursday the 4th of August at the Evington Hall. Nine members were present.

As is usual in August, this was a members' meeting where we all brought a plate of food to share, and we also looked through old W.I. memorabilia.

We discussed our programme for next year and a few other matters of business.

We had a lovely selection of food to enjoy, and then we looked through some of the papers that Mrs Argar and Mrs Bowes had brought along.

We had a very enjoyable time, chatting and looking at these, and I especially enjoyed

looking at our programmes dating back to 1926.

Some of the competitions were: neatest darn in a sock, a carved potato, a gift made for one shilling, underwear made for two shillings, a piece of jewellery made from a quarter pound of liquorice allsorts and my personal favourite from December 1970, neatest ankles.

Our next meeting will be in the Evington Hall on the 1st of September at 7.30pm, when our speaker will be Melanie Gibson-Barton.

Her talk is entitled *Bruges – it's more than just chocolate*. Any new members will be made most welcome.

**Fiona Steward**



## WYNCOT KENNELS

and

## CATTERY

(Hastingleigh)

FOR COMFORT AND PEACE OF MIND  
WHERE A WARM CARING ATMOSPHERE  
IS ALWAYS AT HAND

HEATED KENNELS AND CATTERY  
FULLY LICENCED, FULLY TRAINED & CARING STAFF

SPECIAL DIETS CATERED FOR

Set in 9 acres overlooking the picturesque Kent Downs, we have 3 large paddocks  
where the dogs are individually exercised and played with

INSPECTION WELCOMED  
(8.30 - 11.30) - (2.30 - 5.00)  
7 days a week

Phone 01233 750323 for any further details

## STELLING MINNIS STORES

Telephone 709 204

[www.stellingstores.tripod.com](http://www.stellingstores.tripod.com)  
[shop@stellingstores.co.uk](mailto:shop@stellingstores.co.uk)  
[stellingminnisstores.facebook.com](http://stellingminnisstores.facebook.com)

NOW OPEN 9.00 to 8.00  
MONDAY TO SATURDAY  
SUNDAY 9.00 to 1.00



Come and do your shopping  
in the friendly atmosphere of  
our family run store!  
You'll find an excellent  
range of Fresh Fruit & Veg  
and Local Meat  
Milk & cream from real cows  
Eggs from real chickens  
Tasty Hams and Cheeses

Plus  
Off License  
National Lottery  
And  
Directions to Almost  
ANYWHERE

POST  
OFFICE

01227  
709204



THE TIMBER BATTS

## New team forges ahead at the Batts

**I**n the current financial and social climate it is always a shame to learn of another village pub closing down.

So it was with joy that we learned of the reopening of the Timber Batts at Bodsham.

Sarah and Ross Berry, and their children Katie and Emily, have moved in and breathed new life into the place.

Ross is a blacksmith and has installed a forge in one of the outbuildings. The pub, which no

longer has its former French restaurant, is open **Thursday to Sunday, noon to 11pm** and offers ale and ciders from Kent, as well as lagers and wines.

There is an outside wood-fired pizza oven which Sarah uses to great effect on Fridays. They are hot, fresh and tasty.

Watch out for the monthly hog roast, too. Welcome to the Berrys. Cheers!

[www.timberbatts.com](http://www.timberbatts.com)

## LEARN FRENCH LOCALLY

Any age, any level, day or evening

Individual or small group

Helen Hewson

01233 750589

**VANESSA LONDON**

**Mill Farm, Bodsham**

**01233 750427**

**Pet Sitting**

**Dry Seasoned Logs**

**Free Local Delivery**

**ROZ BACON**

Moonraker, The Street, Hastingleigh,  
Ashford, Kent TN25 5HU

01233 750327 (ans)

roz.bacon@btinternet.com

**BED & BREAKFAST**

*Qualified Guide to City of  
Canterbury and  
Cathedral Guide.*

*Delightful rooms in a  
lovely village.*

## CHILHAM FEEDS

**01227 731159**



9am - 5pm weekdays, 9am - 1pm Saturdays

Wide variety - Friendly service - Reasonable prices - Large stocks

For Horses, Dogs, Cats, Sheep, Goats, Pigs, Poultry, Rabbits, Birds, Fish etc.

Bedding - Vitamins - Supplements - Conditioners - Accessories

East Stour Farm, A28 Godmersham, Nr Chilham, Kent

'And  
may  
it often  
be so...'

*THE ELMSTED AND HASTINGLEIGH PARISH MAGAZINE.*  
April 1899

**BURIAL.**  
May 13—Annie Frances Hayward, at Hastingleigh, aged 26 years.  
On Sunday, June 20th, a special form of Prayer and Thanksgiving to Almighty God for the protection afforded to the Queen's Majesty during sixty years of her auspicious reign, will be used in both Churches.

Our Diamond Jubilee Commemoration Fete will be held, we hope, on Thursday, June 24th, Evington Park, by the kind permission of Sir John Honeywood, Bart., having been placed at our disposal for the occasion. The Committee have been making great efforts, and special thanks are due to Mr. Holiday, Mr. Pettitt, Mr. Newman, Mr. P. Barlings and Mr. Viall, who have undertaken the arduous task of collecting. We are glad to say that nearly £20 has been raised, which we hope will enable us to carry out the proposed programme, which includes races, a tea for all parishioners, a band, dancing, and fireworks.

The Elmsted Sick Benefit Society held their annual festival on Saturday, May 8th. A goodly number mustered at the Parle's Church at 11 o'clock, when the sermon was preached by the Vicar. After Service an adjournment was made to "The George," Stone Street, where Mr. Newport had evidently spared no effort to provide a dinner worthy of the occasion. After the good things had been done ample justice to the customary tastes were given, and several of the members sang some excellent songs. We are glad to say the number of members has increased during the past year, and that there is a balance in hand of over £30.

The sister Society at Hastingleigh held their Club Day the following week, on Saturday, May 15th, and a brighter day they could not have chosen. Divine Service was first held in the Parish Church, when the Rector preached. The dinner took place at the "Bowl," where Mr. Cobb had prepared an excellent repast. The Rector, as Chairman, gave the usual toasts, which were well received, and we must congratulate the Society on the great musical ability its members displayed during the afternoon. The Club is also to be congratulated that, although the share-out rule was abolished only last year, there is now a substantial balance in hand of £40.

The annual Festival and Conference of Sunday School Teachers will be held this year at Canterbury, on June 20th. The Council hope to secure as speakers some of the Bishops attending the Pan-Anglican Conference.

The Flower Service was held in Elmsted Church on Sunday afternoon, May 16th, when many bunches of beautiful flowers were brought as offerings. Those lovely blossoms from the hedgerow, to St. Thomas' Hospital. All who brought flowers should feel happy in knowing that by doing so, they have given comfort and pleasure to the sick and dying. Such little acts of love God will never forget. In acknowledging the receipt of them, the Matron of St. Thomas' Hospital writes:—"Please accept many thanks for the cases of cut flowers you have kindly sent for the patients and nurses. They are much appreciated."

On Wednesday, May 12th, the Evington Cricketers played their first match of the season against Nersham on the Mersham ground. It was unfortunate that several of our players were unable to play that day. The weather was bitterly cold, and really chilled the ardour of the valiant Evingtonians. It is enough to say we returned home, not victorious exactly, but by no means crushed. It is to be hoped that in future we shall always be able to muster a strong eleven, and no doubt such a thing as defeat will not often be the lot of the Evington Club.

Bright weather favoured the Match with Brabourne on Wednesday, May 19th, which was played on the Evington ground, and a very pleasant afternoon was passed. Although so early in the season, there was some snow play on both sides. When stumps were drawn at half-past six, victory rested with Evington. May it often be so!

**A**s I was rummaging around on the internet I came across this copy of *The Elmsted and Hastingleigh Parish Magazine* of April 1899.

There are reports from the committee tasked with raising money to celebrate Queen Victoria's jubilee at Evington Park; The Elmsted Sick Benefit Society's annual slap up at the George on Stone Street and the Elmsted Church Flower Service.

The Sister Society had a roast at The Bowl where they showed 'great musical ability'. One can presume that this was Victorian for a 'sing song'.

And to cricket... (in the days when every village had a team) Evington lost the first match of the season to Mersham but won the second against Brabourne. The editor wrote: 'And may it often be so!'

**History Buff**

**RICHARD GILBERT**  
**PLUMBING & CENTRAL HEATING**  
Established 25 years

**Oil & Gas Central Heating Specialist** – OFTEC & Gas Safe Registered Landlord's Gas Safety Certificates.

Wood Burning Stove Installations - HETAS registered  
Full central heating installations and systems updates; oil boiler and oil tank installation and replacement; gas boilers, fires, cookers and hobs. Chimney sweeping and Flue Liner installations.

**All Domestic Plumbing including** – Power flushing, unvented hot water systems, bathroom and showers including tiling, hot water cylinders, water softeners, sink, dishwasher and washing machine installations, replacement radiators and thermostatic valves.

01233 81256

07860 87783

**SIX MILE GARAGE LTD**

STONE STREET, STELLING MINNIS, CANTERBURY, CT4 6DN

[www.sixmilegarage.co.uk](http://www.sixmilegarage.co.uk)

01227 709214/491 Fax: 01227 709331

- Service and Repairs to Cars and Light Commercial Vehicle
- Class 4 and 7 M.O.T Testing
- Diagnostic Tuning Centre
- Accident Repair Centre
- Car Sales
- Collection & Delivery

**Forecourt Petrol & Shop**

**Open 7 Days a Week**

# Dust off your boots

**A**t last - we enjoyed the summer, so it's now time to look forward to the monthly walks.

They all take place on the **second Sunday in the month**, beginning at 2pm, usually starting from Evington Hall.

Details of the route will be posted each month in the Community News, including any change in the start point. If you have not been before, they usually last about two hours

and provide a really convivial way to spend a Sunday afternoon.

**Derek Harris** 01233 813711  
[derek@j-dsolutions.co.uk](mailto:derek@j-dsolutions.co.uk)

**Walk leaders:**

**Oct 9** Stan & Sheila Burrage

**Nov 13** Derek & Janet Harris

**Dec 11** Val Kerry

**Jan 1** Mince Pie Walk

**Feb 12** Hilary Pittock

**Mar 12** Robin & Yvonne Helmer

**Apr 9** Helen Ransley

**May 14** Jack & Christine Luck



PILGRIMS LANE

## Charity fair

The Lord Whiskey Sanctuary Fund is holding a Boot and Autumn Fayre on Sept 17 at Park House Animal Sanctuary, Stelling Minnis.

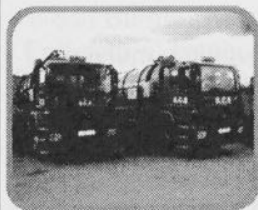
Boot Fair starts at 8am: cars £6.50/ vans £10. Entertainment from 11.30am.



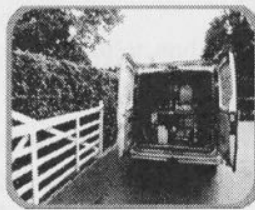
# S.C.S.

Cesspool / Septic Tank Emptying Service  
For That Quality Service

All Types of Tanks Emptied



Septic Tanks/Cesspool Tanks  
Treatment Plants  
High Pressure drain jetting  
Soakaways etc



Regular Automatic Bookings



01233 646767 / 07773 491356



Card Payment Accepted



www.southerncesspoolservices.com info@southerncesspoolservices.com

## KENT & SUSSEX HOLIDAY COTTAGES



Looking to invest in a holiday property or have an  
outbuilding to convert? Then come and talk to us about  
how we can help you get the best return on your investment.

— 01304 619 444 —

www.kentandsussexcottages.co.uk  
info@kentandsussexcottages.co.uk

12 King Street Sandwich Kent CT13 9BT

# The Parish upon the Hill

The churches of St James the  
Great and St Mary the Virgin

**W**ell here we are in the  
Garden of England (or  
should that be Eden?)  
and summer did arrive.

Whenever I am outside in  
the garden or out and about in  
my end of the  
benefice, I count  
my blessings that  
God called me to  
such a beautiful part  
of the country.

But it's easy to  
see God in this  
gorgeous place, but  
how do people who live in really  
difficult areas find beauty in their  
surroundings?

The secret is to look for  
God on the inside. Whenever I  
meet new people, I am amazed  
by how lovely they are on the  
inside. People with big hearts  
and kind souls. They radiate care  
and love, and have an inner

beauty. God can be found in the  
most surprising of places.

In the details of creation,  
the smile of a stranger. A simple  
act of kindness from an  
unexpected source, the bustle of  
a noisy town or the quiet of a

still morning. Being a  
Christian is an act of  
faith. I can prove Jesus  
existed, I can research  
his life in historical  
texts. There are  
records of his life in  
many other places

than the bible. Was he the Son  
of God?

Well he said so, so if we  
don't accept that as truth then  
he was either a liar or madman!

A liar does not fit with his  
life and works as he lived out  
what he said and taught, and a  
mad man would not have been  
able to sustain his ever-growing

‘ It's easy  
to see God  
here... ’

following, so what stops so many of us from accepting this truth?

I think the answers to that question are as varied as the people who are asking it! For many I think perhaps it is fear of change, or reluctance to change! The idea that if I hold to be true all that which I have heard about "this Man" then I must change.

Make commitments to certain things, go to church, behave a

certain way, do good deeds and generally put in more effort than is within my comfort zone!

Well I think the one thing nearly all people have in common is a reluctance to change. Change is uncomfortable for most of us and this is true of those within church, as well as those outside.

That is why churches can be divided by changes of style, music, books, seating etc. We all like what we are used to.

So my challenge to the reader is, not to look to start with trying to change, but to change how we look. Be yourself because that's the person God loves, but try and see the good

(or God) all around us. The good in our neighbours, our surroundings, our lives. Look for what is best in even the darkest of situations and remember that most of the people around us don't have their 'stuff' anymore together than we do!

They are probably just as insecure, shy, self-doubting and easily knocked back as we are. Smile, even when you don't feel like it and see how many people

smile back. See the beauty in all things and try not to take your happiness at someone else's expense.

If we really did "Love our neighbour the way we would like to be loved" then we would see God all around us and the world would be a little more like heaven than it currently is.

So, I give thanks to God for being here, and I hope all of you are able to be glad in where you are.

I wish everyone a little vision of heaven in their daily lives and wish you all a great last bit of summer.

**Lorraine Lawrence**  
Associate Priest

“ And do  
some good  
deeds... ”

**Sunday 4th** 9.30am Cluster Service Holy Communion at Waltham. 6pm Evensong BCP at Petham.

**Sunday 11th** 8am Holy Communion at Waltham. 10am Messy Church at Bodsham. 11am Communion at Petham.

**Sunday 18** 9.30am Communion at Waltham. 11am Communion at Hastingleigh. 11am Harvest Festival at Petham. 6pm Evensong at Elmsted.

**Sunday 25th** 9.30am Communion at Elmsted. 11am Communion at Petham. 11am Communion BCP at Hastingleigh.

**Tots and Tales:** a free group for 0-4 year-olds and their grown-ups. We have stories, craft, singing and fun! Tea, coffee, juice and biscuits. **Every Monday, 10-11am at Elmsted Church. Messy Church** is on the second Sunday of the month at **Bodsham School**.

#### This month's flowers and cleaning volunteers:

	<b>St Mary's</b>	<b>St James'</b>
Sept 3 & 10	Mrs Young Mrs Courtney, Mrs Jerrom	Mrs McFarlane Mrs Hewson
Sept 17 & 24	Mrs Morris Mrs Waters	Mrs Wright Mrs Thrupp

**Priest-in-charge:** The Rev Ravi Holy: The Vicarage, Wye 01233 812450 [ravi.holy@wyebenefice.org.uk](mailto:ravi.holy@wyebenefice.org.uk)

**Associate priest:** The Rev Lorraine Lawrence (with special responsibility for the parishes of Hastingleigh, Elmsted, Petham, Waltham): The Vicarage, Hastingleigh, 01233 750987 or 07894 4034409 [lorraine\\_lawrence@btinternet.com](mailto:lorraine_lawrence@btinternet.com)

**Churchwardens:** Mrs Bacon 01233 750327

Mrs Ten Hove 01227 700460

**United Wye Benefice** 01233 813793 [www.wyebenefice.org.uk](http://www.wyebenefice.org.uk)

# Diary dates

**1 Sept** WI  
**5 Sept** ECP 7.30pm  
**7 Sept** Coffee Morn 10.30am  
**8 Sept** Art Society  
**8 Sept** Elmsted PC 7.30pm  
**13 Sept** Hast'leigh PC 7.45pm  
**14 Sept** Singing Club  
**21 Sept** Singing Club  
**28 Sept** Singing Club

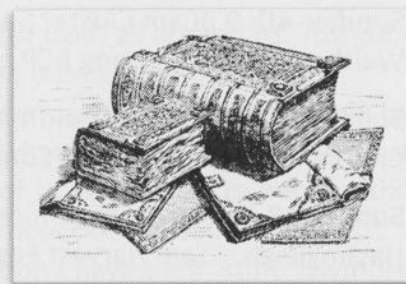
**All dates at Evington Hall unless stated.**

**AF** **AJ Fortescue & Son Ltd**  
BUILDERS & CONTRACTORS

EXTENSIONS, ALTERATIONS,  
REPAIRS, GROUNDWORK

Trustworthy, Reliable,  
Long established local business

Waterside Farm, West Brabourne,  
Ashford, TN25 5NA  
Tel: 01303 813108  
E-Mail:  
office@ajfortescueandson.co.uk



## Library times

The Mobile Library now comes on alternate Tuesdays, from 9.45am to 10.15am.

The next visits for your diary are Sept 6 and Sept 20. Then... Oct 4, Oct 18, Nov 1, Nov 15 and Nov 29.

Wye Library is open Tue 9am to 1pm; Thurs 2pm to 6pm; Fri 9am to 1pm and 2pm to 5pm; Sat 9am to 1pm.

## And the winner is...

The Evington Community Project 100 Club draw latest draw.

**1st prize** No 15  
**2nd prize** No 8  
**3rd prize** No 2

## Get into the spirit

Does anyone have any folk tales or mysterious stories for our October edition?

Anyone heard of the ghostly Horseman of Olantigh? Do we have anything that goes bump in the night in Elmsted and Hastingleigh? Let us know at the usual email address.

## Paper sale

Now that the printing of this magazine is out-sourced we have some leftover 'Premium Copy' paper for sale.

A4 white, 10 reams @ £4.50, and various colours @ £8.50 a ream. Contact Sarah Pell: 01233 812325 or e.s.pell@btinternet.com

## Hoe down

There will be a barn dance on **Saturday, October 15, 7.30pm** in the Evington Hall.

Proceeds in aid of your local charity, *The Guild of St John of Beverley for the Deaf*.

More details in the October issue!

## September

The name September comes from the Roman word *septem*, which means seven, because in the Roman calendar it was the seventh month.

The Anglo-Saxons called it *Gerst monath* (Barley month), because it was their time when they harvested barley. They also called it *Haefest monath*, or Harvest month.

**Michaelmas Day**, the feast of Saint Michael the Archangel, is celebrated on **September 29**. He is the patron saint of the sea and maritime lands, of ships and boatmen, of horses and horsemen. He was the angel who threw Lucifer out of Heaven and there is a stained glass window in his honour in St Mary's.

**Michaelmas Day** is traditionally the last day of the harvest season which used to begin on August 1 and was called *Lammas*, meaning *Loaf Mass*.

Farmers made bread from the new crop and gave them to their church. This ended when Henry VIII broke from the Catholic Church.

**History Buff**



## SAVE £££S ON SKIP HIRE ACROSS KENT

4, 6, 8 & 12yd Skips  
Domestic & Commercial  
Reliable Service  
Permits Arranged  
Competitive Rates  
Fully recycled at our own facilities



CONTACT US TODAY  
TO FIND OUT MORE

01303 888373  
COUNTRYSTYLERECYCLING.CO.UK

**COUNTRY style**  
RECYCLING

# Free flu jabs if you're 'at risk'

Wye Surgery offers vaccinations to protect  
against those seasonal coughs and sneezes

**F**lu is a highly infectious  
and potentially serious  
illness caused by

influenza viruses. Each year the  
make-up of the seasonal flu  
vaccine is designed to protect  
against the influenza viruses that  
the World Health Organisation  
decides are most likely to be  
circulating in the coming winter.

Flu is caused by a common  
virus that can affect your nose,  
throat and lungs. It's sometimes  
referred to as 'seasonal flu'  
because it tends to occur around  
the same time every year.

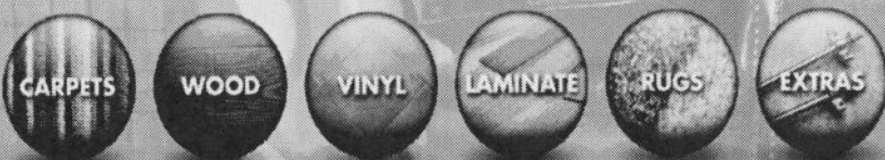
In the UK, people usually  
get flu between December and  
March though outbreaks can  
occur as early as October and as  
late as May.

This year Wye surgery is  
holding the first Flu clinic on  
Saturday 1<sup>st</sup> October. Regular

immunisation is given free to the  
following 'at-risk' people:

- people aged 65 or over
- people with a serious medical condition
- people living in a residential or nursing home
- the main carers for an elderly or disabled person whose welfare may be at risk if the carer becomes ill
- adults over the age of 18 at risk of flu
- pregnant women
- healthcare or social care professionals involved in patient care
- those who work in close contact with poultry.

The flu vaccine is usually given  
on the NHS as an annual nasal  
spray to children aged two, three



**BEST SELLING  
SELECTA TWIST  
40 oz WOOL TWIST  
80% PURE NEW BRITISH WOOL  
£19.95 sqm INCLUDING FITTING**

OPEN MONDAY - FRIDAY 9AM - 6PM | SATURDAY 9AM - 5PM

**carpets direct**

Proudly rated 9.9 out of 10 by our customers  
**Checkatrade.com**  
Where reputation matters

showrooms: SELECTA HOUSE | CHARING HILL | TN27 0NL  
www.charingcarpets.co.uk

**01233 714999**

Nick Horton  
**COUNTRY GRASSCARE**

Lawn Care, Mowing, Strimming and Brush Clearing  
For larger gardens, paddocks and orchards

Small business — Established 9 years  
No VAT

Contact Nick on 07787 411685  
01233 812848

**G.A. WATTS**  
**Electrical Installations**  
**Approved Electrician**

**NICEIC DOMESTIC INSTALLER**

New installations. Extra points. Complete rewires.  
Appliance testing and electrical surveys.

Security lighting.  
Specialist in sympathetic  
Wiring for period properties.

For personal attention  
And free estimates  
(01227) 709376  
(07973) 480241

## Children also at risk

and four-year-old plus children in school years one, two and three, and to children aged two to 17 years at a particular risk of flu.

Flu spreads easily via droplets in coughs and sneezes. Your hands can also become contaminated with the virus, and you may spread it via the surfaces you touch.

You can help to prevent spreading it by covering your mouth and nose with a tissue when coughing or sneezing, and washing your hands regularly with soap and water.

If you're at high risk of complications, getting the flu vaccine every year can greatly reduce your chances of catching flu.

Wye Surgery welcomes your feedback, so after your next visit, please log on to NHS Choices and let them know how it went.

You can also leave feedback on the surgery website.

[www.wyesurgery.co.uk](http://www.wyesurgery.co.uk)

## Tour of the gardens at Godington

**J**oin Viv Hunt, Head Gardener, and Fiona Abrahams, Horticultural Lecturer, during September to enhance your knowledge and enjoy a relaxed, informative session within the inspirational setting of Godinton Gardens.

Who better to explain how to get the best out of your garden than Viv, who has been at Godinton for more than 17 years, and Fiona, who taught at Hadlow College for nine years.

A reminder: the Christmas Workshop on December 10 has only a few places left. Due to the popularity of our Estate Walks, Nick Sandford will lead a final walk on 1st November, the last day of the season.

Enjoy the remainder of the summer and start planning for the autumn months!

[www.godingtonhouse.co.uk](http://www.godingtonhouse.co.uk)

## Elegant Venue for Business Events, Weddings & Celebrations

PLUS

Classes & Activities:

Pilates, Yoga, Ballroom Dancing, Latin & Salsa, Nordic Walking,  
Singing, Work-Out, Piano, Squash, Swimming (summer)



[www.charlton-park.org](http://www.charlton-park.org) for details:  
Bishopsbourne, Canterbury CT4 5JA

**ELIZABETH MILLER** MSSCh MBChA

*Chiropodist*



TEL.  
01233 750200

*Home visits by appointment*

## Style Matters

CVs, Brochures, Programmes. Wedding and Personal Stationery.  
Proofreading and research services.  
Special rates for Students: theses etc.

Telephone: 01233 750425

Emails: [kerry.relton@googlemail.com](mailto:kerry.relton@googlemail.com)

[jill.relton@tesco.net](mailto:jill.relton@tesco.net)

# Lorry way down...

This month in the  
African adventures of  
Vince and Jac Martin  
of Hastingsleigh...  
the coppers want a  
bribe and Vince  
meets an angry mob

**W**E spent about a week  
getting from south  
western Tanzania to the  
Indian Ocean in the east of the  
country at Dar es Salaam.

We really wanted to avoid the  
city centre at Dar (apparently it is  
crazy there), so we headed for the  
coastal town of Bagamoyo about  
40km north of Dar.

This is an old  
slavery port and does  
contain many old  
colonial buildings  
(mostly German)  
including a really nice  
Boma (fort), but it is  
not a place that  
endeared us, and we

only stopped there (at the rear of a  
hotel), for a few days, even though we  
had intended to park up here for a  
week or so. The massive amount of  
Sand Flies and Mosquitos didn't help!

The new tarmac road to  
Bagamoyo was a pleasant surprise,  
the 113 speed humps in less than  
70km were not a pleasant surprise But  
it seems that East African countries

are obsessed and addicted to speed  
humps, small humps, massive humps,  
multiple humps, but the one thing that  
they have in common is that they all  
conspire to destroy your suspension and  
to make a journey uncomfortable!

I would guess that approx 1 in 4  
speed humps are not painted, have no  
warning signs, and some seem to have

been deliberately sighted  
under a tree so they are  
impossible to see them in  
the shade on a sunny day,  
and many many are installed  
on the open road where the  
speed limit is 120kmph  
(about 70mph).

We've hit speed humps at  
about 50kmph (30mph) and

the truck has literally taken off over  
these monsters. The truck has always  
escaped without any mechanical  
damage, but it inevitably results in  
complete carnage in our living  
accommodation.

We have been stopped for  
speeding three times now in Tanzania.  
The first time they accidentally wiped off  
the footage on the speed camera so we

‘We’ve hit  
bumps at  
50mph!’



### Imaginative design

- ♦ From single items to full room plans
- ♦ From budget basic to dovetailed hardwood
- ♦ Kitchen fitting service
- ♦ Repairs & alterations



**07715 565030**

**01227 700883**

Christmas Cottage

Richdore Road

Waltham

Kent CT4 5SH

**bengrillet@btopenworld.com**

## YOGA CLASSES

**WALTHAM  
VILLAGE HALL  
MON EVENINGS**



**PETHAM  
VILLAGE HALL  
WED EVENINGS**

*Suitable for absolutE beginners to experienced students;  
Men or women and a wide range of fitness levels.  
Yoga will help with flexibility, stretching, relaxation and stress.*

*I ALSO OFFER A VARIETY OF MASSAGE TREATMENTS:  
To ease stiff joints, promote health and well being and for stress.  
(Fully qualified ITEC/LCIC/Diploma in Yoga Teaching/Life Coach)*

*Phone or email: Lynn 01227 700071/07913305175  
**lynn@saxby4.orangehome.co.uk***

refused to pay, the second time (I never learn, eh) we were caught red-handed and had to pay a \$12 fine.

The third time, we were definitely not speeding, and refused to pay what would have effectively been a bribe, so we gave the policeman a pair of toy eyes (an ironic gift), and drove off with the other policemen laughing at the "bent copper".

After leaving the Indian Ocean we drove north east past Kilimanjaro, at Moshi, and onto the tourist hub town of Arusha. This is very central to all the "Northern Circuit" National Parks.

Our original idea was to drive through Ngorongoro Reserve to Serengeti NP, and then camp one night there and then carry on driving through to the other side.

At this point we realised that self driving in the Tanzanian parks was not encouraged (unlike many other countries that we had driven through) and to do this two-day drive was going to cost us over £800 in park and camp site fees, and we still wouldn't have

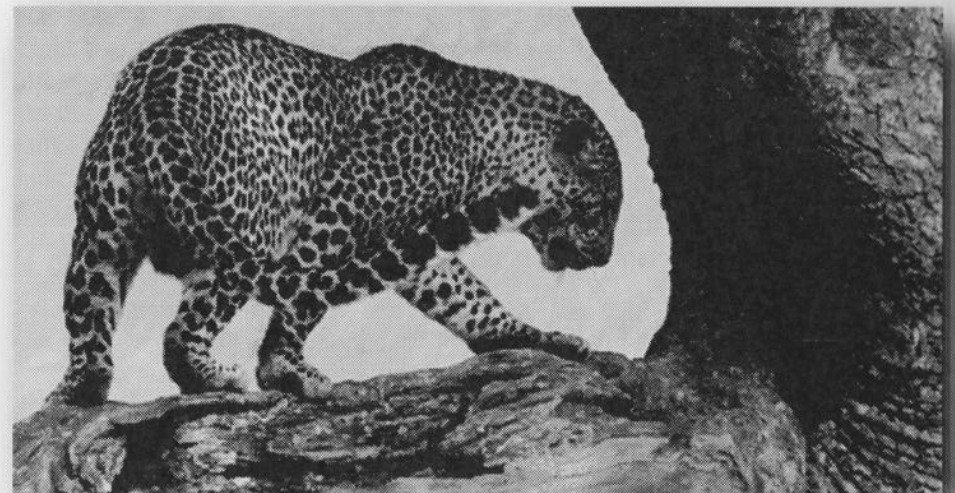
entered Ngorongoro crater. So we booked a three-day, two-night safari with a local Maasai driver and Landcruiser. This was obviously expensive but at least we would get to see the Serengeti and the crater and I'd have a few days off driving.

The next three days were spent game viewing, and we saw some fantastic wildlife, especially the big cats of the Serengeti, and Ngorongoro Crater was a beautiful backdrop for it.

But as a safari experience, it was not great. That may sound strange but Tanzania is absolutely flooding these National parks with thousands and thousands of safari vehicles, and especially the crater which is less than 20km wide in the base of the crater

At one point I counted over 100 identical (closed in, which we hate anyway) safari vehicles viewing a Black Rhino that couldn't even be seen without binoculars.

The park authorities have a 50 per cent extra charge if the safari



## LOCAL WINDOW CLEANER



Contact Paul Boxall

01233 750206

## Reena Platt

Sewing - repairs, alterations, curtains etc

01233 650737



## MICHAEL RUST

### LETTERING AND CARVING STUDIO



Sculpture and carving in wood and stone.  
Architectural lettering in stone, wood and engraved glass.  
Memorials and inscriptions designed and cut in the finest hands.

The Studio, Sycamore Barn, Tamley Lane  
Hastingleigh, Ashford, Kent TN25 5HW  
Telephone: 01233 750305  
Email: michael@studiorust.co.uk [www.studiorust.co.uk](http://www.studiorust.co.uk)

vehicles are open. That's crazy. We had to do this trip to these parks as we were in Tanzania, but it blew our budget, and it definitely wasn't worth the money.

We have since met quite a few other overlanders and they all have the same opinion. Namibia, Zambia, South Africa and Botswana offer a much nicer safari experience, whether you self-drive or not, and all are considerably cheaper to visit.

For us, we now know that self-driving ourselves in the National Parks is an important part of the trip, and unless it's not possible to take Colonel K into a certain area, that's exactly what we will do from now on. After leaving Arusha we stopped at a Snake Bite Clinic, which we both found fascinating, and I for one was shocked to find all the beds full with snake bite victims.

These included one small boy who had been bitten on his skull by a Red Cobra that had crept into his bed at night seeking the warmth of his body, then had struck as the lad woke up. Another boy was bitten on the hand while waking up. Most other bites were from Cobras, Mambas and Puff Adders and were to the lower limbs.

The clinic is run as a charity and does some amazing work. We felt very privileged to be shown around, and even shown the patients' wounds.

Our next stop was the town of Mwanza on the southern shores of Lake Victoria, the second largest town in Tanzania, and booming. We ended up

camping on the grass area of the Yacht Club (not as posh as it sounds I promise you), and ended up staying here for nearly a week.

While here we looked at the possibility of getting Gorilla Tracking Permits for Rwanda, and it was apparent that these were all booked up until September (this was in mid-July), and as this was the main reason for visiting Rwanda (we could also try in neighbouring Uganda and DRC) we decided to rethink our plans.

Instead of heading west to Rwanda and driving clockwise around

‘ He was  
bitten on  
his head ’

Lake Victoria (Africa's largest lake), we decided to turn north east up the lake and into Kenya and travel anti-clockwise around the lake through Uganda and Rwanda and then back into Northern Tanzania. This was for

two reasons. Firstly by the time we got to Uganda and Rwanda, the peak season will be more or less over.

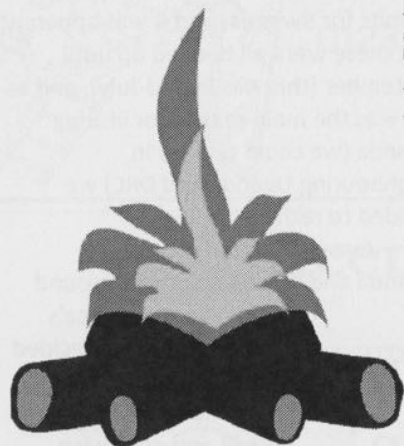
So, we stand a much better chance of getting the elusive Gorilla Permits (between \$500 and \$750 each), and secondly there was a chance that by heading to Kenya we may be lucky to see the migration/mass river crossing by millions of Wildebeest.

At the border we managed to get a multi-entry East Africa Visa (for \$100 each). These were the last two East Africa visa stickers that they had and will save us time and money as they allow us 90 days travel through Kenya, Uganda and Rwanda.

Within 10 metres of entering Kenya – we were right next to the

# LOGS & FIREWOOD

**For Good Quality,  
Seasoned  
Burning Wood**



**Ash or mixed logs  
(dry)  
cut to order**

**Ring John Austen**

**(01227) 700570**

## Olde English Pest Control

Rabbits, Moles, Squirrels, mice, rats, foxes etc

Plus ALL Public health Insects.

Written reports provided.

24/7/365 Call out. [www.oldeenlishpestcontrol.co.uk](http://www.oldeenlishpestcontrol.co.uk)

Email. [barryluckhurst16bore@gmail.com](mailto:barryluckhurst16bore@gmail.com) Home. 01233

640681

Mobile 07790 532420

border gate – I hit a car! To be precise, I opened up the side of a Toyota estate like a can of sardines, then ripped out his rear light cluster for good measure.

I pulled over (it was my fault despite him being stopped almost diagonally across the road), and within two seconds I was surrounded by about 100 young black guys looking to lynch the Mazunga (white man)!

It was a pretty scary situation. They also surrounded Jac's door. I found the driver of the other car in the crowd, and told him I wasn't going to talk about compensation until the angry crowd dispersed.

Then a bit of quick thinking on Jac's part had the desired effect. She stood on the wing of the truck and started

videoing the crowd, that moved them off! I agreed a compensation amount of \$20 (yes \$20), shook his hand (with Jac recording) and drove off quickly before he realised how much \$20 actually was!

That night we camped in the back of a Church Mission and were entertained by several small boys, and then the next morning (a Sunday) we were treated to some singing from the church hall; a pleasant experience and certainly better than the hotel car parks of Tanzania that we used a few times.

Then we drove to the Maasi Mara National Park, and spent three days

camping in Colonel K inside a totally unfenced section of grassland, with the roar of lions and in the proximity of elephants each night.

The highlight for us, and something we will never forget, was witnessing the mass migration of zebra and wildebeest across the Mara River. It really was a fantastic sight, thousands and thousands of animals trying to cross without being swept away to certain death and also trying to avoid the crocodiles that take them.

This was a great safari for a



reasonable cost (less than £400 for three days, including Colonel K and two nights camping in a great "wild camp" situation). Take note Tanzania. We are now in Nairobi, which is like a

different planet with its coffee shops, restaurants and huge shopping malls.

Today we have had two tyres fitted, we've had haircuts, the laundry has been through a washing machine, and we will be ready to move soon.

**We hope everyone in Hastings and Elmsted is well, and thanks to those that have taken the time to email us. It's always great to hear from home.**

**Vince and Jacqui Martin**  
[jacmart5@icloud.com](mailto:jacmart5@icloud.com). **We would love to hear from you.**

[www.lorrywaydown.com](http://www.lorrywaydown.com)



## AFB ELECTRICAL LTD

Electrical Contractor



**All electrical work undertaken**  
**Electrical condition reports**  
**Heating controls - including the new**  
**smart "nest" thermostat**

Contact Andy Burchell:  
01233 632424 or 07739 259953

## Containerised Storage available locally

Fully secure  
Indoors or outdoors  
Competitive rates

01233 720871  
info@tdenneandsons.co.uk for details

## BOSSINGHAM GROUNDWORK & LANDSCAPING

EXCAVATION  
CONCRETING  
DRAINAGE  
CAR PARKS  
DRIVEWAYS  
BRICKWORK



PATIOS  
PONDS  
TURFING  
FENCING  
PLAYGROUNDS  
EQUESTRIAN ARENAS

M: 07894 007 660      W: 01303 890 704  
WWW.BOSSINGHAMGROUNDWORKS.COM

## MATHS TUITION

- GCSE & iGCSE
- Key Stage 2-4
- Preparation for Kent Test & Entrance exams
- Enhanced DBS certificate

I am patient, reliable and approachable.  
Using a wide range of resources I  
enable students to reach their potential.



**Clare Newman 01227 700291**

## aldingtonosteopathy

The Surgery, Goldwell Close, Aldington, Ashford, Kent. TN25 7DY.

Can provide effective treatment for many conditions including:

Back and neck pain	Sports injuries
Headaches	Trapped nerves
Arthritis	Shoulder pain
Sciatica	Whiplash
Knee problems	Ligament sprain

Also available specialist osteopathic clinics for:

Pregnancy related conditions

Cranial osteopathy for babies

**01233 720160**

[www.aldingtonosteopathy.com](http://www.aldingtonosteopathy.com)



**Bossingham**  
pre-school

- Children aged 2-5 years
- Experienced & friendly staff
- Quiet rural location
- Breakfast & after-school clubs

Situated in purpose-built premises, within the grounds of Stelling Minnis Primary School, we offer creative and stimulating activities to help the physical, social and educational needs of every child. There's an all-weather outdoor play area, optional breakfast club available from 8am and after-school club available until 6pm.

visit: [bossinghampreschool.co.uk](http://bossinghampreschool.co.uk)  
or call: **01227 709156**

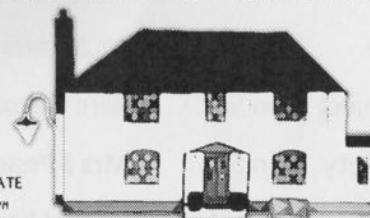


AT HASTINGLEIGH, KENT (nr Wye, off the A28)

CAMRA GOOD BEER GUIDE 2007-2016. ASHFORD, FOLKESTONE & ROMNEY MARSH PUB OF THE YEAR 2012.

### OPENING HOURS

MONDAY	CLOSED
TUESDAY	5pm - 10pm
WEDNESDAY	5pm - 9pm
THURSDAY	5pm - 9pm
FRIDAY	5pm - 11pm
SATURDAY	MIDDAY - LATE
SUNDAY	MIDDAY - 9pm



10 CONSECUTIVE YEARS IN  
CAMRA'S GOOD BEER GUIDE!

FIND US IN THE  
2016 EDITION!



A 1740's PUBLIC HOUSE WITH A BEER GARDEN AND A BARN, SERVING THE FINEST LOCAL KENTISH ALES.  
PLEASE NOTE: WE'RE CLOSED MONDAYS, OPEN FROM 5PM WEEKDAYS, FOOD ONLY AT WEEKENDS, NO DOGS EXCEPT GUIDE DOGS.

[thebowlonline.co.uk](http://thebowlonline.co.uk)

[enquiries@thebowlonline.co.uk](mailto:enquiries@thebowlonline.co.uk)

01233 750354

## Tree Surgeon and Fencing Contractor

- Tree surgery: Trees shaped, reduced, or removed.
- Hedge cutting.
- Stump grinding.
- Garden fencing supplied and erected.
- Hedges planted.



Toby Gardener  
Beriscot  
Hastingleigh

07831 473981  
(Eve) 01233 750489  
[tandrgardener@btinternet.com](mailto:tandrgardener@btinternet.com)

## Community Contacts

Elmsted Parish Council		<b>Tracey Block</b> 01233 750415
Hastingleigh Parish Council		<b>Tracey Block</b> 01233 750415
Evington Hall (Bookings)		<b>Shelley</b> 07401 908249 bookings@evingtonhall.org.uk
Evington Hall Committee	Hon Sec	<b>Mrs S Lawson</b> 01233 750288
Evington Community Project	Hon Sec	<b>Mrs S Boxall</b> 01233 750206
Evington Gardeners' Society	Hon Sec	<b>Mrs J Pearce</b> 01233 750382
Art Group	contact	<b>Mrs V Kerry</b> 01227 700843
Footpath Walks	contact	<b>Mr D Harris</b> 01233 813711
Women's Institute	contact	<b>Mrs J Bowes</b> 01233 811875
Parent and Toddler Group	contact	<b>Mrs N Phipps</b> 01233 750221
Neighbourhood Watch	Hastingleigh	<b>Mr G Block</b> 01233 750415
Neighbourhood Watch	Elmsted	<b>Mr J Argar</b> 01233 750311

### **SARAH de ROUGEMONT**

Upholstery

07973 377817

01227 455841

### **COUNSELLING SERVICES**

Bev Russell DipCouns

MBACP

brcounselling@yahoo.co.uk

www.brcounselling.co.uk

07505 749643



**PAINTING & DECORATING**  
**DAVID FARNFIELD**

**FOR ALL YOUR DOMESTIC  
DECORATING NEEDS**

**INCLUDING SASH WINDOW RESTORATION**



**WALLPAPERING**

**07710 130275**

**01233 750450**

**enquiries@davidfarnfield.com**



**Hastingleigh Garage**

***Motor Vehicle & Agricultural Engineer***

***MOTs, Welding***

***Vehicle bodywork repairs & spraying***

***Hastingleigh Yard, Hastingleigh, Ashford, Kent***

***Telephone 01233 750413***