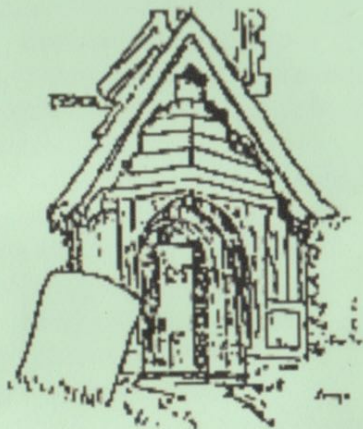




Elmsted with Hastingleigh Community News



*St James the Great
Elmsted*



*St Mary the Virgin
Hastingleigh*

December 2016 & January 2017 40p

December and January in Elmsted with Hastingleigh

AS I write this the first of the seasonal storms is battering at the window and I'm finding it hard to remember the sunny Autumn days of not so long ago. Winter is coming.

Welcome to our double edition of the *Elmsted with Hastingleigh News*, combining December and January.

As you all know this is a busy time of year with many community events so I've had to squeeze a lot into these pages.

Hence, apologies in advance if you have sent a full or half-page piece of editorial and it has been edited down.

Meanwhile, enjoy your read. There are some interesting memories of Elmsted (page 9), a local wreath-making course (page 28), with gallons of mulled wine being dispensed at the village hall (pages 11&25) and the Vicarage (page 16).

Merry Christmas and Happy New Year from the magazine committee.

The Editor

Contents

Hall improvement	3
Parish councils	3
W.I. Minutes	5
Gardeners	7
Elmsted memory	9
Music night	11
Library times	11
Footpath Society	13
Wye Benefice	15
Church times	17
Diary dates	18 - 19
Wye Surgery	21
Dr Fox	23
ECP	25
Lorry Way Down	27
Timber Batts	31
The Bowl Inn	33
Contacts	40
Christmas service	41

Submissions

Please send any promotional literature for your event in Word format rather than pdf.

News, views etc to: elmstedwithhastingleighnews@yahoo.co.uk. Or write to The Secretary, Beddlestone Grange, Hampton Lane, Brook, TN25 5PN.
Advertising queries to: shepandali@hotmail.com

LOGS & FIREWOOD

For Good Quality,
Seasoned



Ash or mixed logs
(dry)

Ring John Austen

(01227) 700570

Chris Dryland

Property Maintenance

Decking - concreting - sheds - pergolas - weatherboarding

Fencing - boundaries - minor electrical - decorating - guttering

small projects - large projects - emergencies

Most aspects of Household and Garden Maintenance

References available

Also

Tipis for hire

www.bighilltipis.co.uk



For reliable service tel: 01233 750350 or 07983 242787

Hall marks mod cons

THE Trustees of the Evington Hall marked the opening of its recent Refurbishment Project with a small ceremony during the Coffee Morning held there on Wednesday November 2, attended by more than 30 people.

As well as the refurbishment of the toilets, the project included disabled access, installation of wifi, enabling the heating to be operated remotely, and an instant water heater for beverages.

The Trustees are extremely grateful to those organisations and individuals that have supported the hall financially to bring this project to fruition.

Sir Charles Jessel kindly performed the official opening by cutting a ribbon.

Sir Charles was very involved with the fund-raising for the hall in the 1950s and was 'almost' the first Chairman of the Hall Committee (John Forge was the first Chairman in 1956 for a few months, after which Sir Charles took over).

Sir Charles was also a Founding Trustee, along with Gerald Secrett and John Forge.

Robin Helmer
Chairman of the Trustees

Parish councils

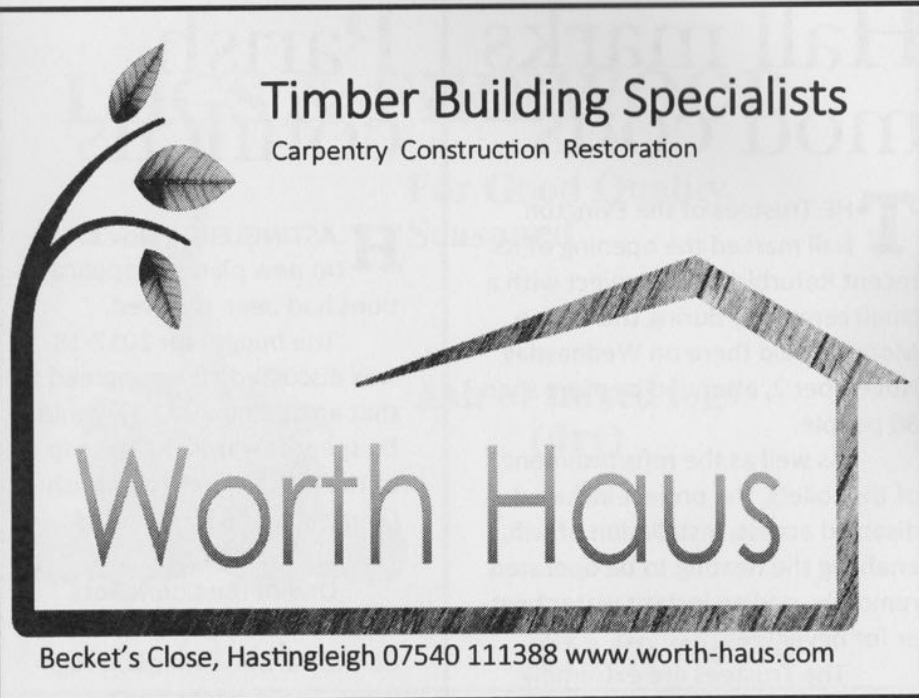
HASTINGLEIGH, Nov 8:
No new planning applications had been received.

The budget for 2017-18 was discussed. It was agreed that an additional £150 would be spent towards the upkeep of the churchyard. The Parish Council agreed to precept for £3,090.

One of the Councillors reported that they had attended the Parish seminar on Highways. The seminar had covered the National Spring Clean in 2017, devolution of powers, street lights across the county being changed to LED lights rather than being switched off completely at night. The next meeting will be held on February 14 2017.

- Elmsted Parish Council meets on December 8.

The Parish Councils wish the residents of both Elmsted and Hastingleigh a happy and peaceful Christmas and a healthy and prosperous New Year.



Timber Building Specialists
Carpentry Construction Restoration

Worth Haus

Becket's Close, Hastingsleigh 07540 111388 www.worth-haus.com

Wye Beauty

Shellac Manicures - colour lasts three weeks
Waxing - hot and warm
Electrolysis hair removal
Red Vein, Skin Tag and Milia treatment
Aromatherapy/Swedish body massage
Spray Tanning - lasts up to two weeks
Ear piercing
Facials

Open Tuesday - Friday 8.30 - 5pm (later by appt)
Saturday 9 - 4pm

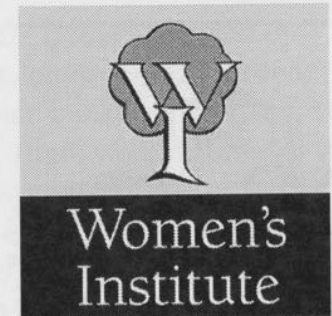
Microdermabrasion
Manicures/Pedicures
Threading

Gift Vouchers available
35 years experience
Qualified/mature staff

Laser Hair Reduction
Dermal Fillers/Botox
Semi-permanent make-up
Guinot Skincare

29 Bridge Street, Wye
Robyn Gardener
AABThC BABTAC
01233 811550

Hastingleigh with Elmsted Women's Institute



TWELVE members were present at our 91st Annual Meeting held in November.

We heard the Secretary's report and the Treasurer's report. Mrs Argar was nominated, seconded and unanimously elected as our President again.

We then had our usual meeting where we discussed matters arising – mainly, it seemed, to do with food!

We will be manning the cake stall at the Christmas bazaar, with donations required, and we will be

going out for a meal for our December meeting.

After we had finished the business matters, we had a bring-and-share supper. These are always enjoyable, and they give us a chance to talk for longer than usual. We had a lovely choice of food and lots of chatting.

Our next meeting will be a meal out at the Halfway House, and we will be back in the hall for our first meeting of 2017 on Thursday 5th of January.

Fiona Steward

SARAH de
ROUGEMONT
Upholstery

07973 377817

COUNSELLING SERVICES

Bev Russell DipCouns

MBACP

brcounselling@yahoo.co.uk

www.brcounselling.co.uk

07505 749643



Restoration & Extensions of Period Domestic Property
House Building and Conversions
Design and Planning Services

Prospect Farm House, Lees Road, Brabourne Lees, Ashford, Kent TN25 6QE

Directors: J.E. and C.M. Browning Bsc (Hons), MCIOB, MASI

Telephone: 01303 813459
VAT Registration No: 661 7887 90



Domestic
Installer
Scheme

Edward Young
Electrical Installation &
Security systems

Registered Electrician
Established over 30 years
All types of installation work carried out
Fault finding and repairs
Farm, domestic, commercial

01303 813654
07702 640237

Talk digs up war history for gardeners

WANDERING in Flanders Fields was the subject of the talk given by Melanie Gibson-Barton at the November meeting, a highly appropriate topic for Remembrance week.

Mrs Gibson-Barton took an aerial view of the First World War and its aftermath, selecting aspects that related specifically to Flanders and illustrating them with excellent pictures.

After hearing about how the war started, the audience saw pictures of works by the war artists, Nevinson and Paul Nash, together with a less well-known painter, Joe English, who campaigned for the freedom of Flanders and designed the headstone for Flemish soldiers. There were old photographs of the trenches in action alongside more recent pictures of some preserved trench lines at the Yorkshire

Trench, Dodengang, and the more comfortable, panelled, German bunker at Zandvoorde.

There were pictures of the devastating shelling of Ypres, now completely rebuilt, and of Poperinge and Talbot House, a place of rest and recreation for allied soldiers of all ranks.

Photographs of the British cemeteries, the French cemeteries with their concrete crosses and the German cemeteries at Langemark, Menen and Vladso with their basalt crosses all bore witness to the colossal loss.

The damage caused by mines was illustrated by large craters still preserved today, and the audience heard how 200 tons of munitions are still being collected every year.

It was an excellent talk, and sobering, and was well-attended and appreciated.

Our next events are the Christmas party with music by the Studio Players on December 13 and a talk about Mongolia given by Pat Morgan on January 17.

The talk on February 21 is entitled 'Seasonal Practical Tasks' and is being given by Caroline Halfpenny. Everyone is welcome.

J.P.

WYNCOT KENNELS and CATTERY (Hastingleigh)

FOR COMFORT AND PEACE OF MIND
WHERE A WARM CARING ATMOSPHERE
IS ALWAYS AT HAND

HEATED KENNELS AND CATTERY
FULLY LICENCED, FULLY TRAINED & CARING STAFF

SPECIAL DIETS CATERED FOR

Set in 9 acres overlooking the picturesque Kent Downs, we have 3 large paddocks
where the dogs are individually exercised and played with

INSPECTION WELCOMED
(8.30 - 11.30) - (2.30 - 5.00)
7 days a week

Phone 01233 750323 for any further details

STELLING MINNIS STORES

Telephone 709 204

www.stellingstores.tripod.com
shop@stellingstores.co.uk
stellingminnisstores.facebook.com

NOW OPEN 8.00 to 8.00
MONDAY TO SATURDAY
SUNDAY 9.00 to 1.00



Come and do your shopping
in the friendly atmosphere of
our family run store!
You'll find an excellent
range of Fresh Fruit & Veg
and Local Meat
Milk & cream from real cows
Eggs from real chickens
Tasty Hams and Cheeses

Plus

Off License
National Lottery

And
Directions to Almost
ANYWHERE

POST
OFFICE

01227
709204



Rachel's Elmsted memories

ADELVE into Elmsted and Bodsham's past in the October issue prompted some memories from a former resident.

Rachel Gibbs, nee Youard, lived in Elmsted with her father Geoffrey Youard MBE (1903-1987), her mother Rosaline (1908-1973), brothers Richard (died 2015), Timothy and sister Frances (Fanny).

The family farmed Elmsted Court Farm from 1931 until after the war when they moved to nearby Beech Tree Farm. Rachel married Dr Denis Gibbs.

Rachel lives in Oxfordshire and receives the *Elmsted and Hastingleigh Community News* by post. She was an avid writer. Here are some gleanings:

14 May 1983. Ted Fowle died. He would have been 90 in June 1983. Ted was the very first employee of the Youards at Elmsted Court. Ted was a shepherd by trade and we had sheep at first, then came the depression in sheep - the ewes were sold at half-a-crown. I started

dairying in 1931. Ted was a general agricultural worker.

Miss Sheddon had a beautiful barn very near Elmsted Court. [It was just past the churchyard on the left on the way to Hill Street]. She put plays on in her barn - eg Sackville West *The Land*. [My father and mother went to it.] She [Miss Sheddon] did not like us at all - mischievous person.

Mrs Pope and Mr Toll lived at Elchin Lodge.

My father remembered some field names: *Lads* - through the field in front of Elmsted Court. It was the field between that and Spong Wood. *Newlands* - turn right outside Elmsted Court and it was the first field on the right. *The Valley* - the field at the bottom of Little Pett, on the left which had poles put in at the beginning of the war to deter enemy planes and is where a Spitfire landed.

She writes: "I was shutting up the chickens with Jimmy Argar one evening when we were machined-gunned by a German plane. He pulled me down behind the chicken houses and the bullets ricocheted off. This was on the slope to the Valley, just below New Rents Cottages.

Clarification. Last month's feature - *Elmsted gives arch surprise* - was the work of the Rev Brade-Birks (see also October issue).

History Enthusiast

LEARN FRENCH LOCALLY

Any age, any level, day or evening

Individual or small group

Helen Hewson

01233 750589

VANESSA LONDON

Mill Farm, Bodsham

01233 750427

Pet Sitting

Dry Seasoned Logs

Free Local Delivery

ROZ BACON

Moonraker, The Street, Hastingleigh,
Ashford, Kent TN25 5HU

01233 750327 (ans)

roz.bacon@btinternet.com

BED & BREAKFAST

*Qualified Guide to City of
Canterbury and
Cathedral Guide.
Delightful rooms in a
lovely village.*

CHILHAM FEEDS

01227 731159



9am - 5pm weekdays, 9am - 1pm Saturdays

Wide variety - Friendly service - Reasonable prices - Large stocks
For Horses, Dogs, Cats, Sheep, Goats, Pigs, Poultry, Rabbits, Birds, Fish etc.
Bedding - Vitamins - Supplements - Conditioners - Accessories

East Stour Farm, A28 Godmersham, Nr Chilham, Kent

MUSICAL ENTERTAINMENT

followed by

DINNER

on

Saturday 17th December at 7pm

with

The Flute Studio Players:

Marie Heinrich, Matthew Leung, Yukiko Okuno,

Miharu Sato, Isobel Sousa, Jillian Storey and

Trevor Wye

at

EVINGTON HALL

Admission: £15

(Must be booked in advance)

Tickets: 01233 750288 or 750375

The doors will open at 6.30pm

No admissions once the music has begun unless between items.

*All proceeds in aid of St Mary's Church, Hastingleigh,
and Evington Hall*

SIX MILE GARAGE LTD

STONE STREET, STELLING MINNIS, CANTERBURY, CT4 6DN

www.sixmilegarage.co.uk

01227 709214/491 Fax: 01227 709331

Service and Repairs to Cars and Light Commercial Vehicle

- Class 4 and 7 M.O.T Testing
- Diagnostic Tuning Centre
- Accident Repair Centre
- Car Sales
- Collection & Delivery

Forecourt Petrol & Shop

Open 7 Days a Week

Hastingleigh Garage

Motor Vehicle & Agricultural Engineer

MOTs, Welding

Vehicle bodywork repairs & spraying

Hastingleigh Yard, Hastingleigh, Ashford, Kent

Telephone 01233 750413

Living in hope of stile repairs

ELEVEN of us set off from the principality of Bulltown by taking the lane past Hope Farm which must have the biggest silage clamp in Kent!

We soon took the path that skirts Cadman's Wood, eventually reaching Hampton Lane, waving at Sarah as we passed.

Half a mile up the lane we took another right, this time skirting Hampton Wood.

At the far end it's always tricky to find the next footpath, but local knowledge meant that with a quick dive into the reeds and some ducking and diving in the wood we were able to cross a little bridge and join the next stage of the walk.

Passing round the back of the wood we soon reached the small fenced woodland that the Mersham Estate planted a few years ago.

At the end of this the walk soon reached a big field which had its usual flock of sheep. Very pleasant walking in this lovely meadow right up to the ancient "Moat" where much discussion took place about this OS-marked feature

(without any firm conclusions!). Then along Hampton Lane the other way to the stile that leads to the pasture paddocks of Hope Farm and after two more stiles back to Bulltown for some tea and cake!

Lovely walk only marred by the last two stiles which were completely broken – note to self: write to The Public Rights of Way people at KCC.

The next walk will be led by Val on Dec 11 and starts at the earlier time of 1.30pm so we can get it in before it's dark.

Derek Harris

New Year's Day walk

BRUSH off the New Year blues and join the rest of the village in the traditional New Year's Day walk.

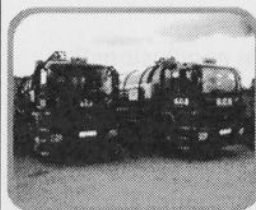
So that everyone can enjoy the outing the walk is not too long and there will be mulled wine and minced pies afterwards!

We start from Evington Hall at 11am on Jan 1st.

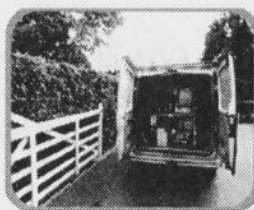
S.C.S.

*Cesspool / Septic Tank Emptying Service
For That Quality Service*

All Types of Tanks Emptied



*Septic Tanks/Cesspool Tanks
Treatment Plants
High Pressure drain jetting
Soakaways etc*



Regular Automatic Bookings

01233 646767 / 07773 491356



Card Payment Accepted



www.southerncesspoolservices.com info@southerncesspoolservices.com

KENT & SUSSEX HOLIDAY COTTAGES



Looking to invest in a holiday property or have an outbuilding to convert? Then come and talk to us about how we can help you get the best return on your investment.

— **01304 619 444** —

www.kentandsussexcottages.co.uk

info@kentandsussexcottages.co.uk

12 King Street Sandwich Kent CT13 9BT

The Parish upon the Hills

WELL, it's certainly been an interesting year filled with all sorts of surprising and unforeseeable events.

Several commentators have pointed out that if, back in January, you'd placed just one pound on an 'accumulator' on Brexit happening, Trump being elected and (most unlikely of all) Leicester City winning the Premiership, you would now be four and a half million pounds better off! Twelve million if your stake had been a fiver...

Meanwhile, here in Wye, the pews which had been in the parish church for over a century were removed in September and are now sitting – or, rather, being sat on – in various homes in the village, mine included. That was something equally unforeseeable when I first arrived here seven years ago...

You see, the golden rule of vicaring, the thing they impress upon us more than anything else at theological college is 'Do not attempt to make *any* major changes (or even any minor ones?!) in your first year in a new parish. And take it slowly even then...' So when I first heard someone talking about

getting rid of the pews not long after I got here, I was like 'Not on my watch, pal!' Not because I had a problem with it. Quite the contrary: we had movable pews in my last church in London so I know what a positive difference it makes, how much more it enables you to do in terms of concerts, barn-dances etc but I also thought that, for some people, it'd be the end of civilisation as we know it so it didn't go any further...

Anyway, seven years later, it's happened! And while I'm sure there's one or two people who will mourn the old pews, it hasn't been a problem for most; mainly because we aren't replacing the pews with modern chairs but with nicer pews – as hopefully you will see when we re-open on Sunday 18th December.

I say 'hopefully' because there's always a degree of provisionality with these things but – without wishing to tempt fate – it's all gone smoothly so far and we're quietly confident that we will hit our target date. In which case, the first service in the restored building will be at 8am

on the 18th (a service of Holy Communion from the Book of Common Prayer) followed by Parish Communion at 10am and we'll be serving mince pies and cupcakes with coffee afterwards to celebrate.

Then at 6.30 we have our Christmas carol service with, again, mince pies and mulled wine to follow. So please do join us for one or more of those services and indeed for one of the three Christmas services the following week.

One word of warning: in addition to upgrading the pews, we have a new underfloor heating system which we hope will make the building significantly warmer in the fullness of time. However, it will take several weeks to get going (if we do it too quickly, it will seriously damage the new flooring) so, sadly, you won't feel the benefit of it this Christmas so

wrap up warm! But the church community is very happy that we have successfully improved our – and your – building in this way.

It will be more hospitable, more flexible, more welcoming and more versatile; a better resource for everyone and what better time to unveil it than Christmas when we celebrate the all-embracing love of God, made flesh in the person of Jesus of Nazareth? God bless you this Merry Christmas.

Ravi

- THE Rev Lorraine Lawrence and family would like to invite all to a Christmas Open House on Sun Dec 11th, 2pm to 7pm at The Vicarage, Hastingleigh, for mulled wine, mince pies, and a chance to meet with friends. Stay a little, or stay a while. All welcome.

Dec/Jan flowers and cleaning volunteers:	St Mary's	St James'
Dec 3	Dr & Mrs Lawson Mrs Day	Mrs Green Mrs Calcutt
Dec 10 Dec 17	Mrs Morris Mrs Waters	Mrs London Mrs Flitney
Dec 24 Dec 31	Mrs Bowes Mrs Helmer	Mrs Healy Mrs Denny
Jan 7 Jan 14	Mrs Hewes, Mrs Healy Mrs Perez, Mrs French	Mrs Gregory Mrs Pay
Jan 21 Jan 28	Mrs Young Mrs Jerrom, Mrs Courtney	Mrs McFarlane Mrs Hewson

Church services in the Parish Upon The Hills

Monday 5, 12, 19th Jan: 2017 9, 16, 23, 30th	10-11am: Tots and Tales at Elmsted (see below)
Sunday 4th Advent 2	4.30am Group Service. Special Advent Service at Petham
Sunday 11th Advent 3	10.00am Messy Church at Bodsham School Making Christmas decorations for your home
	10.45am Service at Waltham at church
	10.45am Service at Hastingleigh War Memorial
	10.45am Service at Petham at church
Sunday 18th Advent 4	9.30am Holy Communion at Waltham
	11.00am Holy Communion at Hastingleigh
	11.00am Family Service in Petham
	5.00pm Evensong at Elmsted
Saturday 24th Christmas Eve	4.00pm Crib Service at Hastingleigh
	11.30pm Midnight Service at Elmsted
Sunday 25th Christmas Day	10.00am Family Friendly Service at Waltham
	10.00am Carols and Holy Communion at Petham
	11.00am Holy Communion BCP at Hastingleigh
Sunday 1st January	Benefice Service at Wye – also come and see the refurbished church!
Sunday 8th	8.00am Holy Communion BCP at Waltham
	10.00am Messy Church at Bodsham School
	11.00am Holy Communion at Petham
Sunday 15th	9.30am Holy Communion at Waltham
	11.00am Holy Communion at Hastingleigh
	11.00am Family Service in Petham
	5.00pm Evensong at Elmsted
Sunday 22nd	9.30am Holy Communion at Elmsted
	11.00am Holy Communion at Petham
	11.00am Holy Communion BCP at Hastingleigh
Sunday 29th	Tba. Please contact the Rev Ravi Holy on 812450 for details.

Diary dates

Tuesdays Toddlers 9.30am-12 until Dec 20. Back on Jan 10.

Wednesdays Evington Community Choir, 7-9pm. Last one Dec 5. Back on Jan 4.

Thursdays Art 9.30am-12.30. Back on Jan 12.

Dec 1 WI 7.30pm

Dec 7 Coffee morning 10.30am

Dec 8 Elmsted PC 7.30pm

Dec 9 Whist 7pm

Dec 11 Footpath soc 1.30pm

Dec 11 Vicar's (p16) 2pm-7pm

Dec 13 Gardeners' Christmas Party 7.30pm

Dec 15 Carols at Bowl Inn 6pm

Dec 17 ECP 11am-12.30pm

Dec 17 Flute concert 7pm

Jan 1 New Year walk 11am

Jan 5 WI 7.30pm

Jan 17 Gardeners 7.30pm

Jan 28 Jumble sale 2pm

All dates at Evington Hall unless stated.

Rubbish collections

DURING the Christmas and New Year period refuse will be collected in the Shepway District a day later than it is normally collected: ie the usual collection on Friday December 30 will be collected on Saturday 31 Dec.

Ashford Borough waste collections in Hastingsleigh over the festive period are:

Recycling: Thursday 29th collection will be collected on Saturday 31st December

Refuse: Thursday 5th January collection will be collected on Saturday 7th January

Recycling: Thursday 12th January collection will be collected on Friday 13th January.

Library times

THE Mobile Library comes on alternate Tuesdays, from 9.45am to 10.15am outside Evington Village Hall. Wye Library is open Tue 9am to 1pm; Thurs 2pm to 6pm; Fri 9am to 1pm and 2pm to 5pm; Sat 9am

A warm welcome

WELCOME to Matt and Emily Clements and their three-year-old daughter Evie, who have moved into Lees Cottage.

Matt writes: "We've met quite a few people already since we arrived as well as children around our daughter's age who she now plays with regularly which has been great.

"We were living in Greenwich for the last 10 years but our families are from Kent: Whitstable, Godmersham and Deal. We got married in Whitstable and had our reception in Godmersham."

Emily and Matt split their time between working from home and travelling for work.

"What brought us here? Peace, quiet, space (for Evie and Boris our dog) and we wanted to come back to Kent and be pretty much in the centre of where our families are.

"So I guess you could say we have come home."

100 Club winners

THE numbers for November's Evington Community Project 100 Club draw are: 1st **79**, 2nd **67**, 3rd **55**.

December & January

DECEMBER got its name from the Latin *decem* (meaning ten) being the tenth month of the year in the Roman calendar.

The winter days following December were not included as part of any month. January and February were later created.

The beginning of the astronomical winter is December 21, the date of the solstice.

January (in Latin, Ianuarius) is named after the word for door (ianua), the opening to the year. The Saxon term was *Wulf-monath*, the wolf month.

December of 2010 was the UK's coldest December since Met Office records began in 1910, with a mean temperature of -1°C.

History Buff

AJ Fortescue & Son Ltd
BUILDERS & CONTRACTORS

EXTENSIONS, ALTERATIONS,
REPAIRS, GROUNDWORK

Trustworthy, Reliable,
Long established local business

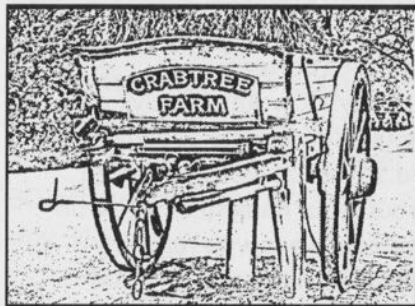
Waterside Farm, West Brabourne,
Ashford, TN25 5NA
Tel: 01303 813108

E-Mail:
office@ajfortescueandson.co.uk

Crabtree Farm Cottages

Self-catering holiday lets in Hastingleigh

- Two cottages, each offering:
- Master bedroom with double oak bed
- Second bedroom with twin oak beds
- Lounge/kitchen, luxury bathroom
- Wall-mounted flatscreen TV
- Pets welcome
- Children's play area



www.crabtreefarm.co.uk
01233 750345

*Ian and Amanda wish you
a warm welcome*

www.bodshamholidaylets.com

B&B

Large Double Bedroom with sofa and LCD Smart TV

Continental breakfast

Tea and coffee-making facilities

The SMITHY

Two Bedrooms
Beamed lounge with wood burner
Fully equipped kitchen
Bathroom
Enclosed garden

The BARN

Two bedrooms
Open lounge
Diner and kitchen
Shower room

T: 01233 750042 M: 07989 584801
E: info@bodshamholidaylets.com

Clean bill of health for surgery

WYE Surgery has been given an overall 'outstanding' rating by the Care Quality Commission (CQC) following its recent inspection of the practice.

The overall outstanding rating is extremely hard to achieve and is a tribute to the hard work and commitment of the 49 surgery staff, all of whom were interviewed by one of the four inspectors who descended on the practice on 31 August and examined, not just the clinical practice, but every aspect of the surgery's functioning.

The CQC is the independent regulator for health and social care in England. It makes sure services such as hospitals, care homes, dentists and GP surgeries provide safe, effective and high quality care and encourage them to improve.

CQC inspection teams are made up of clinical and other experts, as well as people with direct experience of the relevant type of care. The teams visit services, speak to staff and patients and observe the care provided. Each service is assessed against five main questions. They are:

- Is it safe?
- Is it effective?
- Is it caring?
- Is it responsive to people's needs?
- Is it well led?

The CQC gives a rating for each of these individual areas, as well as an overall rating for the service. The four levels of rating are:

- Outstanding
- Good
- Requires improvement and
- Inadequate - the service is performing badly and CQC has taken action against the person or organisation that runs it. This may include placing in special measures.

Inspections are carried out with two weeks' notice, during which the surgery is required to submit documents, including the practice policies and procedures, all of which have to be up to date and compliant with CQC requirements.

Preparation for a CQC inspection requires hours of extra work for staff. In the current climate of diminishing resources and ever increasing demands, the overall outstanding rating is particularly impressive. It is very good news for the practice and for all the patients who benefit from its care. Well done Wye!

Penny Haynes
Chairman

**The Wye Surgery Patient
Participation Group**
wyesurgery@yahoo.co.uk

Nick Horton
COUNTRY GRASSCARE

Lawn Care, Mowing, Strimming and Brush Clearing
For larger gardens, paddocks and orchards

Small business — Established 9 years
No VAT

Contact Nick on 07787 411685
01233 812848

G.A. WATTS
Electrical Installations
Approved Electrician

NICEIC DOMESTIC INSTALLER

New installations. Extra points. Complete rewires.
Appliance testing and electrical surveys.

Security lighting.
Specialist in sympathetic
Wiring for period properties.

For personal attention
And free estimates
(01227) 709376
(07973) 480241

Seasonal self-help eases pain

I want to thank all of the staff and the patient participation group for the efforts they put in to achieve the outstanding result of the CQC visit (see previous page).

It comes at the most difficult time General Practice has faced in the 22 years of my career. Tougher times await, as the Government impose STPs, Sustainability and Transformation Plans (read swingeing cuts).

We are as well placed as any to survive but it will not be easy and I expect large numbers of practices to fail in the next two years.

Self-help forum

This is one of the best ideas I have seen for some time, a gold mine of advice: www.selfcareforum.org
Common conditions with excellent fact sheets on:

- Low back pain
- Eczema
- Heartburn/indigestion
- Children's fever
- Constipation
- Headache/migraine
- Cough (adults)
- Acne
- Sore throat

It also contains **Self Care** for healthy living, including weight, diet, smoking and fitness.

Other useful advice on the site includes Managing chronic conditions, tips for living with a long-term condition. There is a range of free courses aimed at helping people who are living with a long-term

condition to manage their condition better on a daily basis:

- The Expert Patients Programme.
- DAFNE (Dose Adjustment for Normal Eating).
- DESMOND (Diabetes Education and Self Management for Ongoing and Newly Diagnosed) for people with diabetes.
- Breathe Easy for asthmatics.

These courses usually run over several sessions and will provide advice and tools to put you in control of your condition.

The following websites provide good information that can help you understand more about the common condition or long-term health problem that affects you:

- NHS Choices
- Patient UK
- Map of Medicine on NHS Choices

Private practice

A number of patients have told me that my involvement in Private Practice has been a talking point so I feel I ought to clarify the situation.

I have not reduced my NHS commitment at all. I am at the practice for eight sessions a week, some of this performing normal GP services and the remainder doing tutorials with my registrar, Musculoskeletal clinics, Cardiology clinics and Minor Surgery.

My private GP role is with a company Private GP Healthcare, which employs me and Rachel Sharp to see patients privately for GP services and Health Checks.

I arrange this work in the evening or on a Saturday so that it does not impinge on NHS time. I have no plans to retire at present.

- Please get your flu jab at the surgery; it is a form of self help. It reduces spread of flu and reduces the load on the practice. Remember, the death rate for over 65s from flu is one in ten who contract it.

Dr Allan Fox

Elegant Venue for Business Events, Weddings & Celebrations

PLUS

Classes & Activities:

Pilates, Yoga, Ballroom Dancing, Latin & Salsa, Nordic Walking,
Singing, Work-Out, Piano, Squash, Swimming (summer)



www.charlton-park.org for details:
Bishopsbourne, Canterbury CT4 5JA

ELIZABETH MILLER MSSCh MBChA

Chiropodist



TEL.
01233 750200

Home visits by appointment

Style Matters

CVs, Brochures, Programmes. Wedding and Personal Stationery.
Proofreading and research services.
Special rates for Students: theses etc.

Telephone: 01233 750425
Emails: kerry.relton@googlemail.com
jill.relton@tesco.net



SEASONAL THANKS

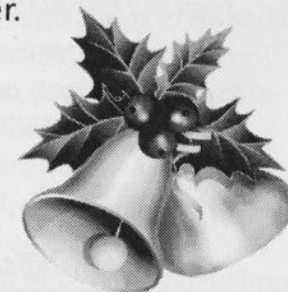
Evington Community Project would like to
thank everyone for their continued support
throughout the years. By way of a sign of our
appreciation of your support, we would like to
invite you all to a seasonal morning of mulled
wine and mince pies.

Saturday 17th December
in Evington Village Hall
from 10.30am – 12pm

Please do come along and join us for a Christmas thank
you. We hope to see you there!

We will also be holding an additional draw of
the 100+ Club with four additional Prizes! Come along and
see if you are a winner.

From Evington
Community Project



Imaginative design

- ♦ From single items to full room plans
- ♦ From budget basic to dovetailed hardwood
- ♦ Kitchen fitting service
- ♦ Repairs & alterations



07715 565030

01227 700883

Christmas Cottage
Richdore Road
Waltham
Kent CT4 5SH

bengrillet@btopenworld.com

YOGA CLASSES

**WALTHAM
VILLAGE HALL
MON EVENINGS**



**PETHAM
VILLAGE HALL
WED EVENINGS**

*Suitable for absolutE beginners to experienced students;
Men or women and a wide range of fitness levels.
Yoga will help with flexibility, stretching, relaxation and stress.*

*I ALSO OFFER A VARIETY OF MASSAGE TREATMENTS:
To ease stiff joints, promote health and well being and for stress.
(Fully qualified ITEC/LCIC/Diploma in Yoga Teaching/Life Coach)*

*Phone or email: Lynn **01227 700071/07913305175**
lynn@saxby4.orangehome.co.uk*

Lorry way down...

RWANDA was a shock, in some ways a very pleasant shock, and in other ways a very 'shocking' shock!

First of all the whole country is immaculately clean. Rwandan's are extremely proud of their country and once a month everyone, including politicians, army, police and even tourists are expected to spend half a day cleaning streets or some other type of community cleaning.

Plastic bags (the scourge of Africa) are completely banned, and if you are found in possession of a single bag you will be fined. Colonel K (our camping truck) was searched at the border for bags.

The capital city Kigali is quite a stunning place nestled in the hills, and full of lots of modern buildings, and there are many, many 'supermarkets'. These are in reality much smaller and less well stocked than the Co-

This month in the African adventures of Vince and Jac Martin of Hastingleigh... they have a sobering tour of Rwanda and submit to a camp haircut!

op in Wye, but compared to most African cities it proved to be a revelation!

Campsites are few and far between in Rwanda, but we managed to find one near the far northern town of Ruhengeri, called Red Rocks, this proved to be a great place, and gave us our first insight to Rwandans, and the terrible events of 1994.

From here we drove to Kigali, and failed to find any sort of camping area, so we ended up having to stay in a hotel room for a few days.

They seem to respect rules and regulations in Rwanda, and subsequently we were not allowed to sleep in the truck in the hotel carpark.

From here we visited the National Genocide Memorial, which chronicles the history leading up to the mass slaughter of nearly 1,000,000 Rwandans

Courtenay & Geering

Event flowers www.cgflowers.co.uk

Christmas
wreath
workshops

Dec 7, 8, 9

Hastingleigh



Louise Courtenay

louise@cgflowers.co.uk

Anna Geering

anna@cgflowers.co.uk

01233 750439

07776 161368

01227 709808

07776 161368

- Parties
- Sympathy
- Weddings

MICHAEL RUST

LETTERING AND CARVING STUDIO



Sculpture and carving in wood and stone.

Architectural lettering in stone, wood and engraved glass.

Memorials and inscriptions designed and cut in the finest hands.

The Studio, Sycamore Barn, Tamley Lane

Hastingleigh, Ashford, Kent TN25 5HW

Telephone: 01233 750305

Email: michael@studiorust.co.uk www.studiorust.co.uk

(mostly minority Tutsi), then showing the horrific details of the three months when the world ignored what was going on in this tiny country in central Africa. It is also home to mass graves where over 250,000 people are buried. A moving place.

Also from Kigali we drove south to a couple of remote rural churches that were also scenes of incredible brutality, in both cases the Tutsis took refuge in these churches thinking they were safe places, and in both instances they were very much mistaken.

Barbaric slaughter took place, killing tens of thousands of men, women and children by gangs of Hutu militia. We even entered a crypt under the church which is piled high with smashed human skulls and bones. The smell of death is evident in these places.

Despite these events only happening 22 years ago, you now find Tutsi and Hutu living side by side again in the same villages, and everyone is quick to point out they are not Hutu or Tutsi, but Rwandan.

It is an amazing transformation, and follows some very brave decisions by their President, including removing many charities, NGOs, closing orphanages (the orphans are placed with other families), empowering women and attracting huge inward investment rather than aid. Most other African

countries could learn a lot from Rwanda. It's not perfect - there is a strong military and police presence everywhere, and the road blocks here are very serious affairs.

After Kigali we headed out eastwards and stayed a couple of nights at a women's centre, where women are encouraged to set up their own businesses and are taught various skills such as cheese-making, basket-weaving etc.

It is typical of Rwanda (it has the 2nd highest proportion of women politicians in the world), to build a facility like this to empower women—we even saw a woman pointing some brickwork here.

We only stayed in Rwanda for about two weeks, and didn't get to see many of the areas we wanted to. It was the rainy season while we were there, and though the main roads here are very good, once off the tarmac it is a different ball game in the truck in the wet muddy conditions.

So with a heavy heart we said goodbye to Rwanda and its mostly immaculate tarmac roads, and crossed into Tanzania via the crazy border crossing there.

The first 100km of 'tarmac' inside Tanzania was ridiculously bad with some horrendous pot-holes that you could lose a petrol tanker down! It took forever to cover this stretch and at times we

The Timber Batts Inn

A 15th century freehouse at Bodham

Kent ales
and ciders
Wines and lagers

Thurs to Sun:
noon to 11pm

Well-behaved
dogs welcome
01233 750083



www.facebook.com/timberbatts

www.timberbatts.com

Wood-fired pizzas
Game burgers
Fish 'n' chips
Baguettes

See Facebook for
food availability

Schoal Hill, Bodham
TN25 5JQ

Also home to Kaos bladesmiths

www.kaosbladesmiths.com

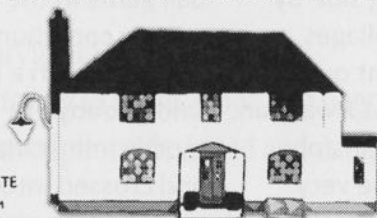


AT HASTINGLEIGH, KENT (nr Wye, off the A28)

CAMRA GOOD BEER GUIDE 2007-2016. ASHFORD, FOLKESTONE & ROMNEY MARSH PUB OF THE YEAR 2012.

OPENING HOURS

MONDAY	CLOSED
TUESDAY	5pm - 10pm
WEDNESDAY	5pm - 9pm
THURSDAY	5pm - 9pm
FRIDAY	5pm - 11pm
SATURDAY	MIDDAY - LATE
SUNDAY	MIDDAY - 9pm



10 CONSECUTIVE YEARS IN
CAMRA'S GOOD BEER GUIDE!

FIND US IN THE
2016 EDITION!



A 1740's PUBLIC HOUSE WITH A BEER GARDEN AND A BARN, SERVING THE FINEST LOCAL KENTISH ALES.
PLEASE NOTE: WE'RE CLOSED MONDAYS, OPEN FROM 5PM WEEKDAYS, FOOD ONLY AT WEEKENDS, NO DOGS EXCEPT GUIDE DOGS.

thebowlonline.co.uk

enquiries@thebowlonline.co.uk

01233 750354

were doing no more than walking pace (you really don't want a broken truck out here). That night we spent camped in the carpark of the grottiest guest house known to man! Thank God for our onboard toilet and shower.

The next few nights were spent in similar establishments, ranging in various states of badness, but we ended up driving right through the centre of Tanzania, through the 'badlands'.

There is nothing here apart from the brand new capital of Dodoma! Whoever thought it would be a good idea to build a city from scratch in the middle of an arid desert? Crazy.

After a quick stop in Iringa for a few supplies, we camped for one night at some ancient ruins, then moved onto a campsite on a farm, and stayed there for a week.

We had our hair cut, and Jac even had her colour done, all on the campsite! This is a lovely relaxing place and we did quite a bit of walking here. Then after a few nights at a coffee farm we returned to Malawi, to Chitimba Camp on the lake.

We ended up staying here for a week again with the Dutch owners Ed and Carmen. Even the local kids started calling to go swimming with them, it's a great place to chill. We then followed

the highland route through Malawi, and after an overnight stop in Mzuzu, we drove to Luwawa Forest where we did lots of walking in very hot conditions.

The access to the forest was down a long dirt track, and we decided to leave as the rains were starting to arrive and it could have made leaving very difficult in the truck.

We are currently in the Malawian capital Lilongwe, and tomorrow we will cross the border into Zambia, then slowing head to South Africa for Christmas, where we have been invited to stay by an ex-Hastingleigh resident's family — can't wait.

We are still loving our little African adventure. Thanks for reading. You can view our full blog and lots of photos at:

www.lorrywaydown.com

Merry Christmas to everyone in Hastings and Elmsted.

Vince and Jacqui Martin
jacmart5@icloud.com

Holiday opening times at the Timber Batts are:

Christmas Eve 12-10pm

Christmas Day 12-3pm

Boxing Day 12-6pm

New Year Eve party £10, 7pm

New Year Day closed

AFB ELECTRICAL LTD

Electrical Contractor



All electrical work undertaken
Electrical condition reports
Heating controls - including the new
smart "nest" thermostat

Contact Andy Burchell:
01233 632424 or 07739 259953
aburchell@afbelectrical.co.uk

BOSSINGHAM GROUNDWORK & LANDSCAPING

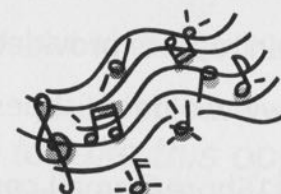
EXCAVATION
CONCRETING
DRAINAGE
CAR PARKS
DRIVEWAYS
BRICKWORK



PATIOS
PONDS
TURFING
FENCING
PLAYGROUNDS
EQUESTRIAN ARENAS

M: 07894 007 660 W: 01303 890 704
WWW.BOSSINGHAMGROUNDWORKS.COM

THE BOWL INN HASTINGLEIGH CHRISTMAS CAROLS



Live music to be announced
Thursday 15th December, 6pm start

Join us for mulled wine, mince pies and merriment
Donations to Evington Village Hall

01233 750354 or www.thebowlonline.co.uk

Christmas Opening Times 2016

Saturday 24th December- 12 until 10pm
Sunday 25th December- 12 until 3pm
Monday 26th December- 12 until 3pm
Tuesday 27th December- Closed
Wednesday 28th December- 5 until 9pm
Thursday 29th December- 5 until 9pm
Friday 30th December- 5 until 10pm
New Year's Eve (Fancy Dress - The Roaring 20s) 5 until late
Sunday 1st January- Closed
Monday 2nd January- 12 until 9pm
Tuesday 3rd January- Closed
All other opening times are as normal

Olde English Pest Control

Rabbits, Moles, Squirrels, mice, rats, foxes etc

Plus ALL Public health Insects.

Written reports provided.

24/7/365 Call out. www.oldeenlishpestcontrol.co.uk

Email. barryluckhurst16bore@gmail.com Home. 01233

640681

Mobile 07790 532420



Bossingham
pre-school

- Children aged 2-5 years
- Experienced & friendly staff
- Quiet rural location
- Breakfast & after-school clubs

Situated in purpose-built premises, within the grounds of Stelling Minnis Primary School, we offer creative and stimulating activities to help the physical, social and educational needs of every child. There's an all-weather outdoor play area, optional breakfast club available from 8am and after-school club available until 6pm.

visit: bossinghampreschool.co.uk
or call: **01227 709156**

The Lord Whisky Sanctuary Fund

Registered Charity No: 283483

Park House, Stelling Minnis, Canterbury, Kent CT4 6AN
Tel: 01303 862622 Fax: 01303 863007

Email: lord.whisky@btinternet.com

We would like to take this opportunity to thank everyone who has given homes to our animals this year. We would also like to thank our loyal supporters and friends, new and old, for their support throughout 2016.

**We wish you all a very
Happy Christmas
and a peaceful New Year
and look forward to seeing you all
again in 2017**

Our first event of 2017 will be our
Fur, Feather & Exotic Exhibition
on Saturday 25th February, 10am-4pm
at Boughton-under-Blean Village Hall.

Visit our website at www.lordwhisky.co.uk
Follow us on Facebook:
The Lord Whisky Sanctuary Fund Kent
Follow us on Twitter: @lordwhiskykent

SAVE £££S ON SKIP HIRE ACROSS KENT

4, 6, 8 & 12yd Skips
Domestic & Commercial
Reliable Service
Permits Arranged
Competitive Rates
Fully recycled at our own facilities



CONTACT US TODAY
TO FIND OUT MORE

01303 888373
COUNTRYSTYLERECYCLING.CO.UK

COUNTRY style
RECYCLING

General Builders and Property Maintenance



All aspects covered

Free Estimates

Glenn Young 01233 750427

Seasoned logs available

free local delivery



PAINTING & DECORATING DAVID FARNFIELD

FOR ALL YOUR DOMESTIC DECORATING NEEDS
INCLUDING SASH WINDOW RESTORATION
WALLPAPERING
FREE Estimates



07710 130275

01233 750450

enquiries@davidfarnfield.com

www.davidfarnfield.com



BEST SELLING
SELECTA TWIST
40 oz WOOL TWIST
80% PURE NEW BRITISH WOOL
£19.95 sqm INCLUDING FITTING

OPEN MONDAY - FRIDAY 9AM - 6PM | SATURDAY 9AM - 5PM

carpets direct

Proudly rated 9.9 out of 10 by our customers
Checkatrade.com
Where reputation matters

showrooms: SELECTA HOUSE | CHARING HILL | TN27 ONL
www.charingcarpets.co.uk

01233 714999

aldingtonosteopathy

The Surgery, Goldwell Close, Aldington, Ashford, Kent. TN25 7DY.

Can provide effective treatment for many conditions including:

Back and neck pain	Sports injuries
Headaches	Trapped nerves
Arthritis	Shoulder pain
Sclatica	Whiplash
Knee problems	Ligament sprain

Also available specialist osteopathic clinics for:

Pregnancy related conditions

Cranial osteopathy for babies

01233 720160

www.aldingtonosteopathy.com

RICHARD GILBERT

PLUMBING & CENTRAL HEATING

Established 25 years

Oil & Gas Central Heating Specialist – OFTEC & Gas Safe

Registered Landlord's Gas Safety Certificates.

Wood Burning Stove Installations - HETAS registered
Central heating installations and systems updates; oil boiler and
oil tank installation and replacement; gas boilers, fires, cookers
and hobs. Chimney sweeping and Flue Liner installations.

All Domestic Plumbing including – Power flushing, un-
vented hot water systems, bathroom and showers including
tiling, hot water cylinders, water softeners, sink, dishwasher
and washing machine installations, replacement radiators
and thermostatic valves.

01233 812566

07860 877836

Office Space

Mersham

- Ideal for start-up business
- Light, airy, ground floor
- Amenable layout
- Generous car parking
- Approx 500 sq. ft.
- Kitchen and separate WCs

Please phone **07768 326337** for further details

MATHS TUITION

- GCSE & iGCSE
- Key Stage 2-4
- Preparation for Kent Test & Entrance exams
- Enhanced DBS certificate

I am patient, reliable and approachable.
Using a wide range of resources I
enable students to reach their potential.



Clare Newman 01227 700291

Community Contacts

Elmsted Parish Council
Hastingleigh Parish Council
Evington Hall (Bookings)

Evington Hall Committee	Hon Sec
Evington Community Project	Hon Sec
Evington Gardeners' Society	Hon Sec
Evington Community Choir	
Art Group	
Footpath Walks	
Women's Institute	
Parent and Toddler Group	
Neighbourhood Watch	Hastingleigh
	Elmsted

Tracey Block 01233 750415
Tracey Block 01233 750415
Shelley 07401 908249
bookings@evingtonhall.org.uk
Mrs S Lawson 01233 750288
Mrs S Boxall 01233 750206
Mrs J Pearce 01233 750382
Mrs Celia Jeffery 01233 750585
Mrs V Kerry 01227 700843
Mr D Harris 01233 813711
Mrs J Bowes 01233 811875
Mrs N Phipps 01233 750221
Mr G Block 01233 750415
Mr J Argar 01233 750311

Priest-in-charge: The Rev Ravi Holy: The Vicarage, Wye 01233 812450
ravi.holy@wyebenefice.org.uk **Associate priest:** The Rev Lorraine Lawrence (with special responsibility for Hastingleigh, Elmsted, Petham, Waltham): The Vicarage, Hastingleigh, 01233 750987 or 07894 4034409
lorraine_lawrence@btinternet.com. **Churchwardens:** Mrs Bacon 01233 750327, Mrs Ten Hove 01227 700460. **United Wye Benefice** 01233 813793 www.wyebenefice.org.uk

Tree Surgeon and Fencing Contractor

- Tree surgery: Trees shaped, reduced, removed. or
- Hedge cutting.
- Stump grinding.
- Garden fencing supplied and erected.



Toby Gardener
Beriscot
Hastingleigh

07831 473981
(Eve) 01233 750489
tandrgardener@btinternet.com

The Christmas Day service.

On Christmas Day at 10.00am we are having a family focused communion service at waltham church. We would love you all to join us. Come dressed Christmassy, or just come as you are. Children you are welcome to bring along a present to show us. There will be a chance to sing some favourite Christmas carols and we would love to see you all.
Lorraine x

Come and Join Us! 😊

Evington Village Hall Committee

Charity Number 302758



The Evington Hall
Hastingleigh

SATURDAY

28th January 2017

2pm

20p entrance



Any offers of jumble to:

Sue Lawson 750288/Sheila Burrage 750375

All proceeds to village hall funds